



The Troll[®]

MATERIAL HANDLING CARTS BY **Telpro Inc.**[®]

OPERATOR'S MANUAL

For Model 1270

Made in Taiwan



! WARNING !

Read and become familiar with this manual **BEFORE** operating unit.

Before operating this equipment, thoroughly read this set of instructions, make sure you understand them, and only then follow the step-by-step directions. Failure to do so could result in serious property damage and / or serious bodily injury.

Telpro Inc.[®]

www.paragonpromfg.com

Warning / Instructional Information Page 4
User Components & Product Specifications Page 5
Care & Maintenance Page 5
Assembly & Use Pages 7-8
Parts Index Pages 8

⚠ Warning ⚠

Read and follow these warnings and the instructions that follow. Failure to do so could result in serious property damage and/or serious bodily injury.

• **BEFORE** operating this equipment, thoroughly read this set of instructions, make sure you understand them, and only then follow the step-by-step directions.

FAILURE TO READ AND FOLLOW THESE INSTRUCTIONS could result in misuse or failure of the equipment. Misuse or failure of the equipment while the cart is loaded can result in overturning the cart and load and load possibly resulting in serious property damage and/or serious bodily injury.

• It shall be the responsibility of the owner of the Troll[®] Cart to keep the product properly maintained.

• As with any material handling equipment, **ALWAYS WEAR APPROPRIATE PERSONAL PROTECTIVE EQUIPMENT** when operating the Troll[®] Cart. Failure to do so could result in serious bodily injury.

• **DO NOT ATTEMPT TO USE YOUR TROLL[®] CART IF ANY PART IS MISSING, DAMAGED OR WORN. ORDER A REPLACEMENT PART IMMEDIATELY.** Using a Troll[®] Cart with missing, damaged or worn components can result in failure of the unit and possibly serious property damage and/or serious bodily injury.

• **The weight capacity of the Troll[®] Cart is 3,000 lbs. (1,360 kg). DO NOT load the unit beyond this limit.** Failure to follow this warning can result in damage to the cart contributing to a sudden failure of the cart and possibly serious property damage and/or serious bodily injury.

• **The load size capacity of the Troll[®] Cart is 4' (1.2m) from the load support frame. DO NOT load the unit beyond this limit or with materials that exceed this limit.** Failure to follow this warning can result in destabilizing of the loaded cart. Such destabilizing of the loaded cart can result in failure of the cart and/or overturning of the cart and possibly severe property damage and/or serious bodily injury.

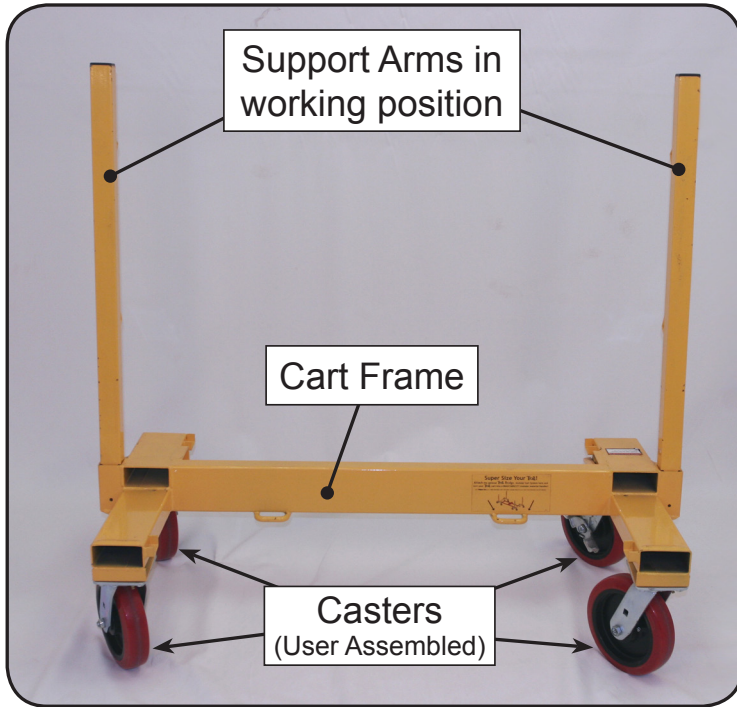
• Operate the Troll[®] Cart only on hard, flat, level surfaces free of obstructions, debris, clutter, pits, holes or openings. Failure to follow this warning can result in tipping the cart and load possibly resulting in serious property damage and/or serious bodily injury.

• When moving a loaded Troll[®] Cart, **ALWAYS** push the cart. **NEVER** pull the loaded cart toward the operator. When moving any loaded cart, unforeseen and unanticipated circumstances can arise which can result in unanticipated motion and/or destabilizing of the loaded cart. Such unanticipated motion and/or destabilizing of the loaded cart can result in failure of the cart and/or overturning of the load and possibly severe property damage and/or serious bodily injury.

• When moving a loaded Troll[®] Cart, **ALWAYS** keep nearby personnel aware of and clear of the cart's motion to avoid being struck and possibly injured by the loaded cart or load.

• The Troll[®] Cart is made of steel which conducts electricity. **KEEP THE UNIT AWAY FROM LIVE ELECTRICAL WIRES.** Failure to do so could result in electrocution.

• Use only Telpro Inc.[®] authorized replacement parts. Installation of other parts can compromise the safe design of the Troll[®] Cart and may cause failure of the unit possibly resulting in serious property damage and/or serious bodily injury. Use of non-manufacturer authorized replacement parts will void all warranties.

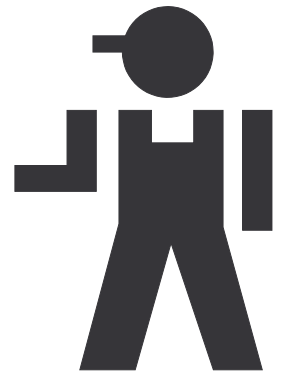
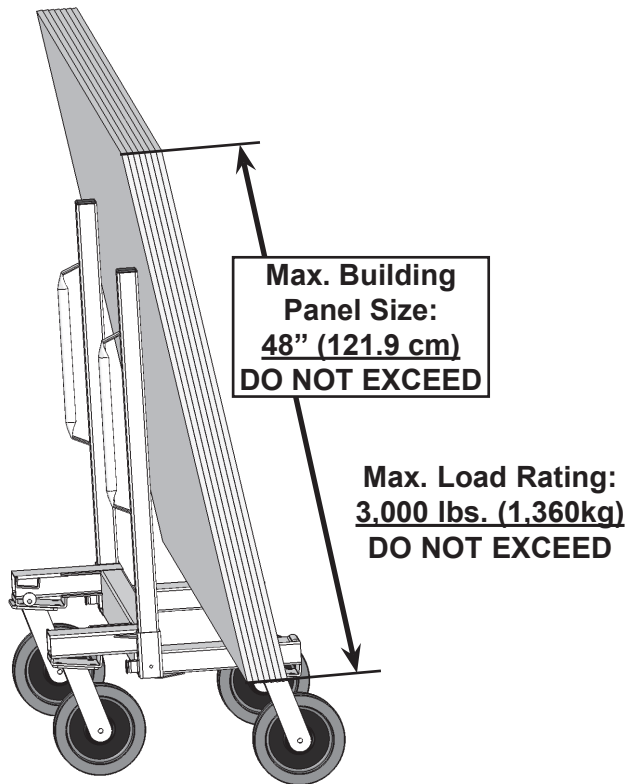


Inspect **FREQUENTLY** (at least daily and before each use):

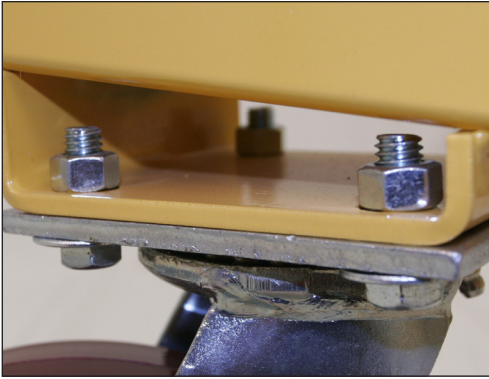
- Inspect casters **FREQUENTLY** (at least daily and before each use) for proper operation of all rollers and bearings. For caster equipped with brakes and swivel locks, check these for proper operation as well.
- Inspect casters **FREQUENTLY** (at least daily and before each use) for secure attachment to the cart frame. Tighten all caster fasteners securely if necessary.
- Inspect the latch pins that secure the upright arms in the working position for proper operation. Repair or replace when necessary to maintain proper function.

Occasionally oil the caster bearings.

Take reasonable care to avoid damaging the Troll® Cart when transporting or using it.



ASSEMBLY & USE



1. For initial assembly fasten all casters securely with four bolts per caster.



2. Press the release tab to remove the upright arms from the storage and transport position.



3. Lock the support arms in the upright position when loading wallboard and similarly configured building materials.



4. As with all carts, when moving the Troll® Cart while loaded, ALWAYS push the loaded cart away from the operator. NEVER pull the loaded cart toward the operator.

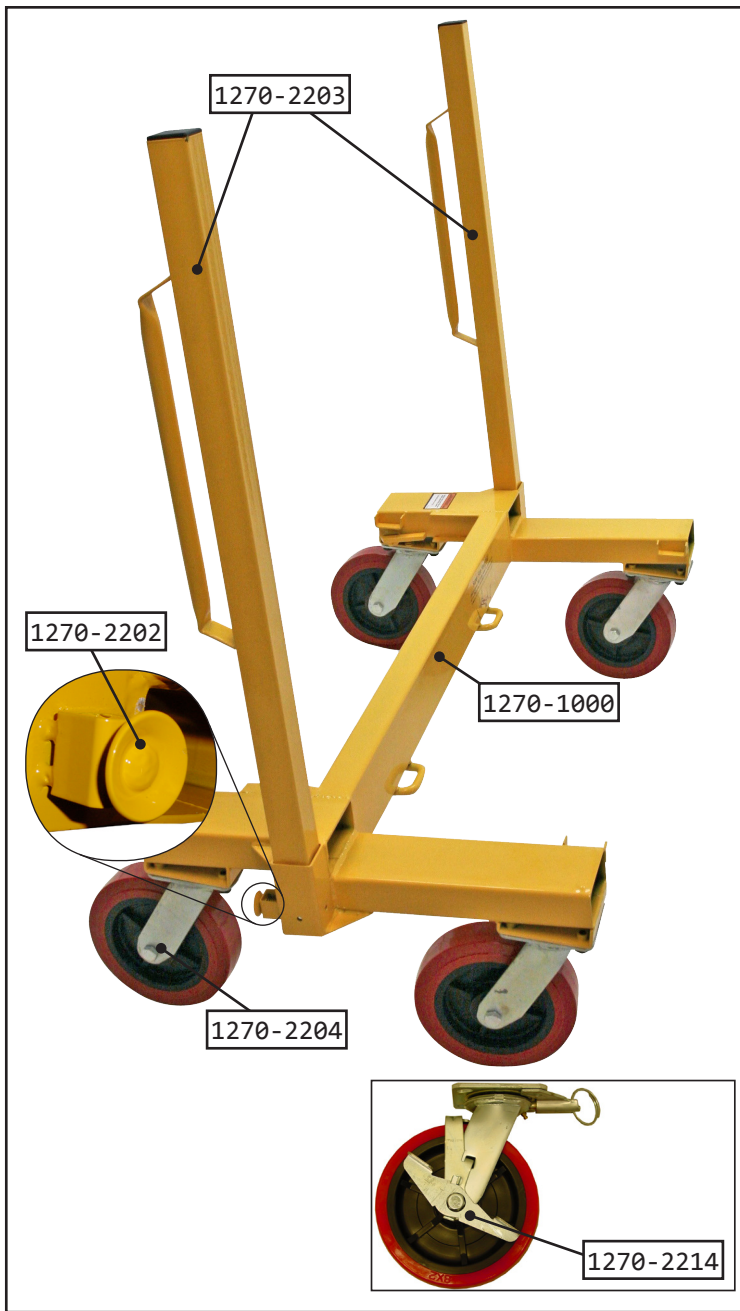


5. The support arms can be positioned to configure the Troll® Cart for use as a flatbed cart.



6. With the arms locked in the storage and transport position, the Troll® Cart can be conveniently handled for loading and compact transportation.

Parts Index



<u>Part No.</u>	<u>Description</u>
1270-1000	Cart Frame w/o casters
1270-2202	Support Arm Pull Pin (each)
1270-2203	Support Arm (each)
1270-2204	Swivel Caster 8" (each)
1270-2214	Swivel-Locking/Braking Caster 8" (each)

Distributed by
Wallboard Tools
www.wallboardtools.com.au



30 Leda Drive, BURLEIGH,
Q 4220
Sales : 1300 653 177